



1388 camino corto





1388 CAMINO CORTO

MLS #202600489

\$980,000

Nestled in the desirable Las Barrancas subdivision, this wonderful 2-bedroom, 3-bath Pueblo-style home offers the perfect blend of character and location. Just minutes from The Plaza, Canyon Road, and local amenities, this home is a lovely retreat surrounded by piñon, juniper and native plants. The entryway leads into a long, light-filled sunroom... the perfect place to leave your skis after a long day in the mountains! A warm and inviting living space is highlighted by traditional architectural details including exposed vigas, hand-crafted wooden accents, beautiful hand-plastered walls and saltillo tile floors. The living room layout is cozy with a kiva fireplace and large windows that bring the outdoors in, while providing tranquil views and abundant natural light. A nicely curved patio/portal completes the living room, allowing plenty of space for outdoor living. The spacious kitchen offers generous counter space and cabinets, stainless steel appliances, and a large countertop between the dining room and kitchen, ideal for both everyday living and entertaining. The main suite is large and comfortable with a good-sized bathroom, walk-in closet and access to a private patio. Near the powder room there is a second ensuite bedroom, offering flexibility for guests or a home office. With timeless charm, a serene setting, and close proximity to the heart of Santa Fe, this home presents a rare opportunity to enjoy both tranquility and convenience.

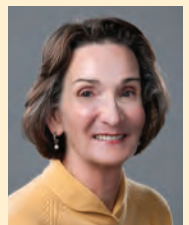
433 W. San Francisco Street
Santa Fe, New Mexico 87501
tel: 505.989.7741

www.dresf.com

A Full Service Real Estate Brokerage

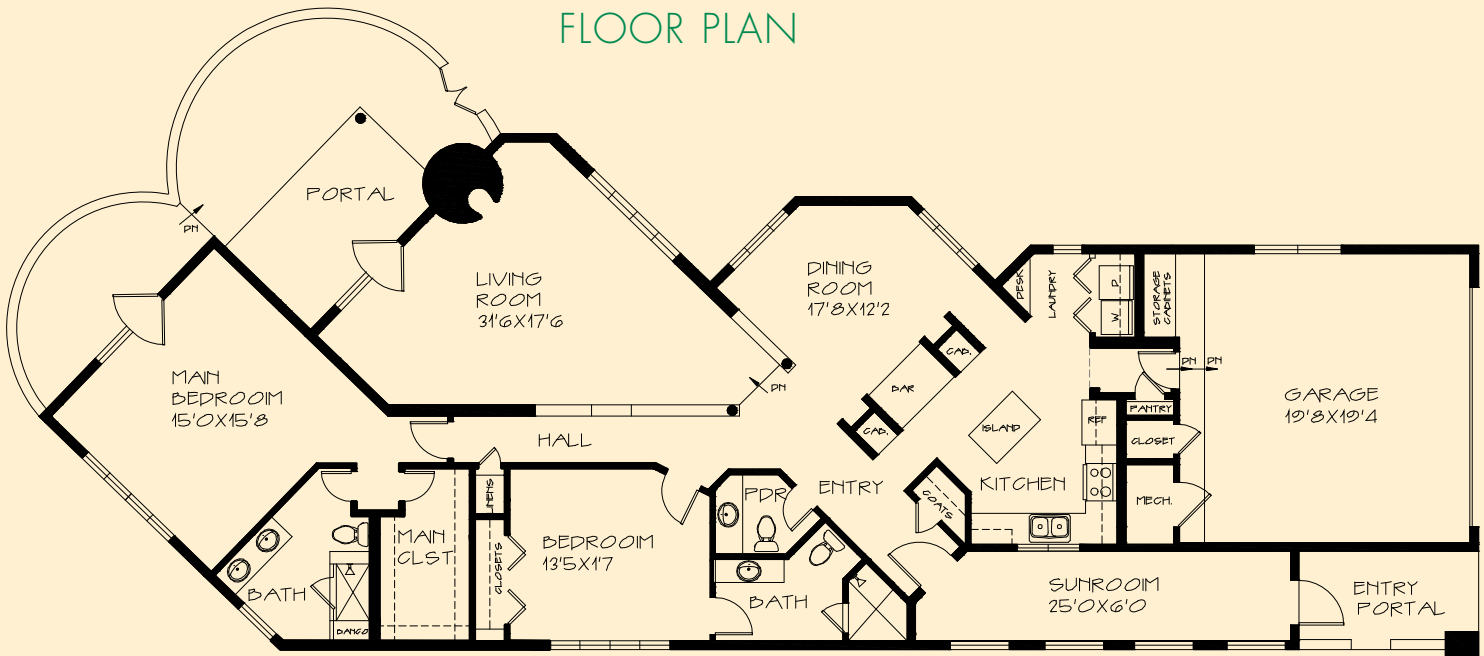
For an
exclusive showing
please contact:
Clara L. Dougherty
Office: 505.989.7741
Cell: 505.690.0471

Email: claradough@gmail.com



expect more.

FLOOR PLAN



1388 CAMINO CORTO

House: Approx. 1,970 sq. ft.
 Single Level, One Interior Step
 Bedrooms: 2
 Bathrooms:
 2 Three Quarter, 1 Half Bath

Attached: 2-Car Garage
 + 4 extra spaces

Total Acres: .26
 Property Zoning: PUD
 Sewage: City
 Water: City
 Construction: Frame and Stucco
 Cooling: None

Heating: Hotwater Baseboard;
 Natural Gas

Association Fees: \$465/Annually

Projected Real estate Taxes: \$7,438.85
 (based on listing price)



The information contained herein has either been given to us by the owner of the property or obtained from sources that we deem reliable. No warranties or representations expressed or implied are made as to the accuracy of the information contained herein, and same is submitted subject to errors, omissions, change in price, and to any special conditions imposed by our principals.