

414 avenida eldorado



ROOM TO RUN WITH YOUR PASSION!

5,196 ACRES OF LAND: 1,080 acres owned fee simple, 4,116 acres leased from state. MLS #201603131 \$3,359,000

Located close to Santa Fe in a horse and agricultural area with 360-degree views of the Jemez, Sangre de Cristo, Ortiz and Sandia mountain ranges, and the spectacular Galisteo Basin, there is abundant wildlife here – including antelope.

Access roads and a producing 6" steel water well are already in place. This property is sited for 21st century equestrian technology... including solar power and other future innovations.

For the horsewoman or horseman Santa Fe offers HIPICO, a world-class equestrian facility that hosts the Santa Fe Summer Series, the Charity Grand Prix de Santa Fe, the Rancho Corazon at Santa Fe Training Facility, the New Mexico Center for Therapeutic Riding, and HIPICO Santa Fe Community Shows.

Enhancing the possibilities: easy access to both the Santa Fe Regional Airport (offering direct flights to and from Dallas, Phoenix and Denver) and the Albuquerque International Airport. Santa Fe offers great restaurants, museums, galleries and is home to the renowned Santa Fe Opera, Indian Market, International Folk Art Market, Meow Wolf (bringing young, technology-savvy artists to the city) to name a few. Your property is only 15 miles away from Santa Fe, the City Different.

Contact Warren Thompson for a guided tour today at 505.577.2744, warrenthompson@mac.com.

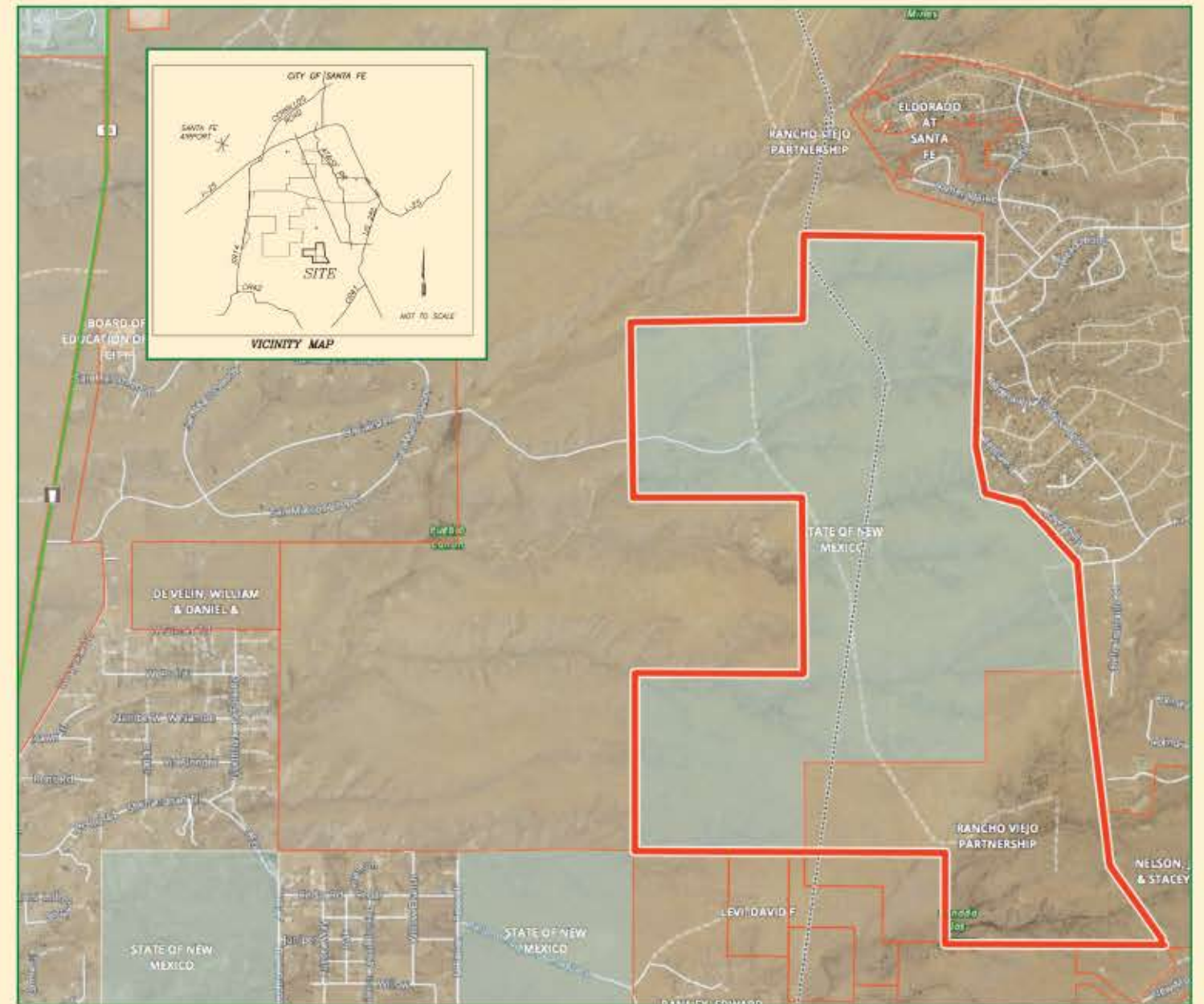
DOUGHERTY
REAL ESTATE CO. LLC

433 W. San Francisco Street
Santa Fe, New Mexico 87501
tel: 505.989.7741
www.dresf.com



A Full Service Real Estate Brokerage

expect more.



A herd of antelope frequent this property. Views abound of the Jemez, Sangre De Cristo, Ortiz and Sandia mountain ranges, and the Galisteo Basin.