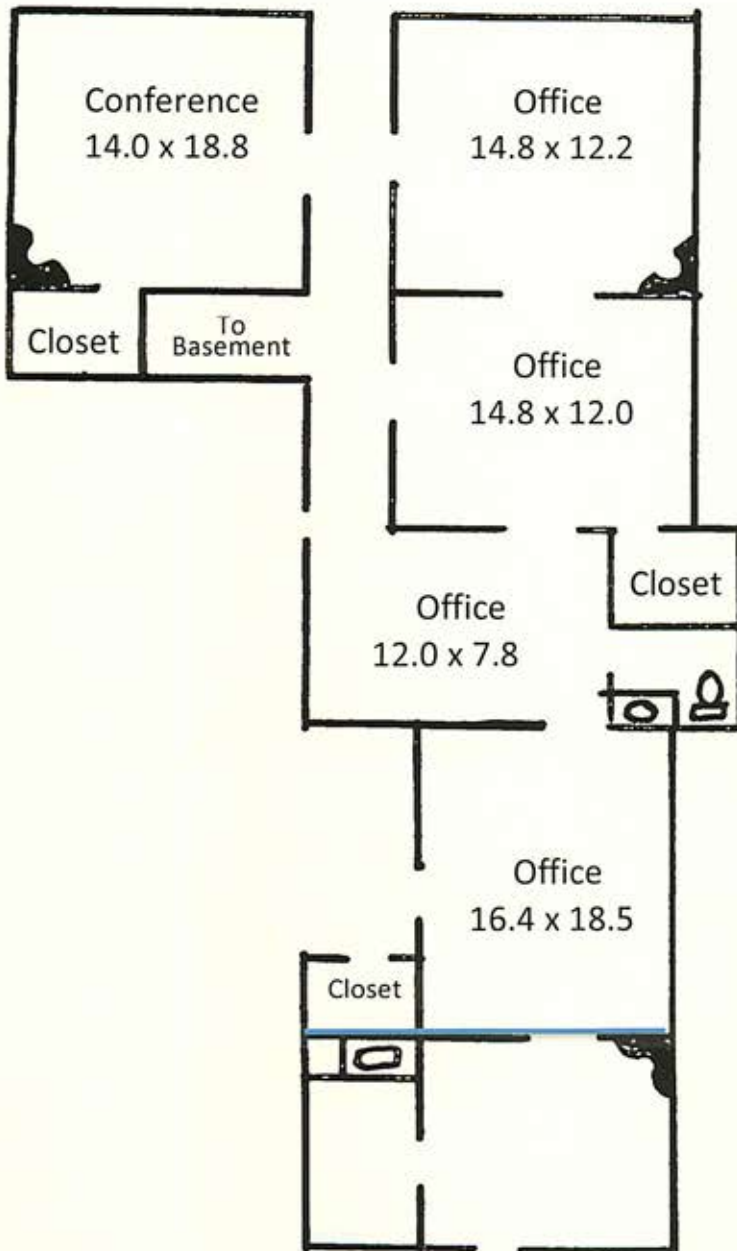


DOUGHERTY

REAL ESTATE CO. LLC

433 West San Francisco Street
P.O. Box 1716 Santa Fe, NM 87504-1716
Telephone: 505-989-7741
Fax: 505-986-9236



RENT

\$2400/month

Modified Gross

MLS # 202100353

316 Paseo de Peralta

1612 Square Feet (Gross Area)

Zoned BCD

4 Offices

Conference Room

One Bathroom

5 Parking Spaces

Storage Area

DSL Available

Lovely grounds

The information contained herein has either been given to us by the owner of the property or obtained from sources that we deem reliable. No warranties or representations expressed or implied are made as to the accuracy of the information contained herein, and same is submitted subject to errors, omissions, change in price and to any special conditions imposed by our principals.