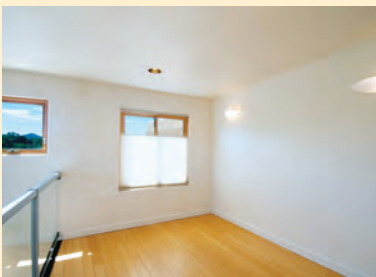
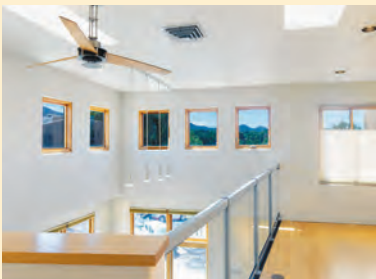
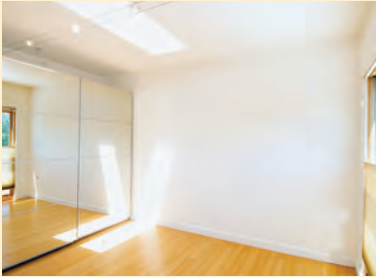


1012 marquez place, unit #1076



MLS #202402413
\$540,000

Light-filled and upscale, this sophisticated live/work loft at Marquez Place is approximately 1340 sq. ft. with 1 bedroom and an office/study. The soaring 17-foot ceilings as you enter the condo, and the upstairs area with glass railing overlooking the great room, add to the spacious and open feel. The height carries into the open-concept kitchen/dining area with its 9-foot ceiling. The elegant kitchen has plenty of cabinet space, and all stainless-steel appliances including a new range. The lower level, with stained concrete floors has the kitchen/dining area and great room, a powder room, and a stacked washer and dryer. The tall, double-hung windows allow for great natural ventilation and abundant light. It is one of the few units that has a clear view to the ski basin and the Sangre de Cristo mountains, enjoyed from both levels. The upper level, with bamboo and tile floors, has a main bedroom loft and a full bathroom. There is an open area perfect for an office, study, or it could be a 2nd bedroom. Off of the great room is a southeast-facing balcony for outdoor entertaining. All outdoor common areas are beautifully landscaped and maintained by professional groundskeepers. Additionally, there is a closet storage area off the outdoor entry. Centrally-located a short distance from the Plaza, Trader Joe's, Whole Foods, Body Yoga, the Railyard Park and a Railrunner Rail stop.

DOUGHERTY REAL ESTATE CO. LLC

433 W. San Francisco Street
Santa Fe, New Mexico 87501
tel: 505.989.7741

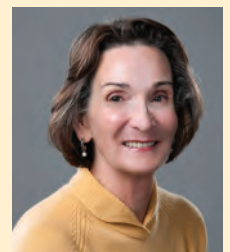
<https://www.dresf.com>

A Full Service Real Estate Brokerage

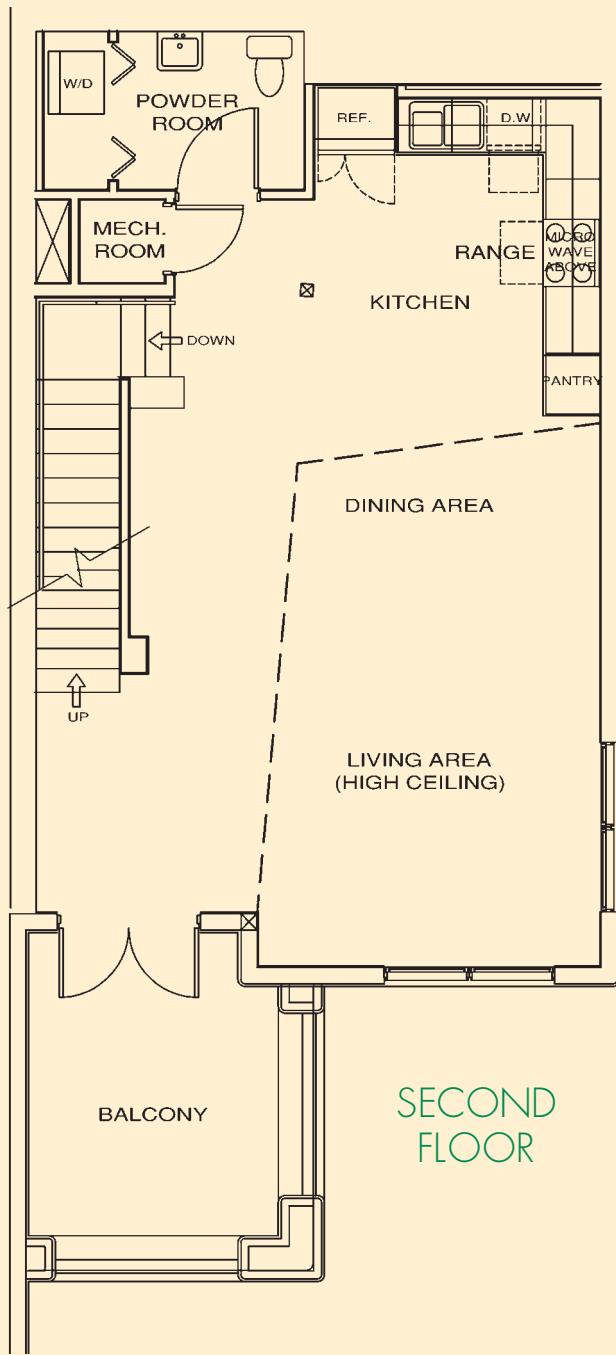
For an exclusive showing
please contact:

Clara L. Dougherty
Office: 505.989.7741
Cell: 505.690.0471

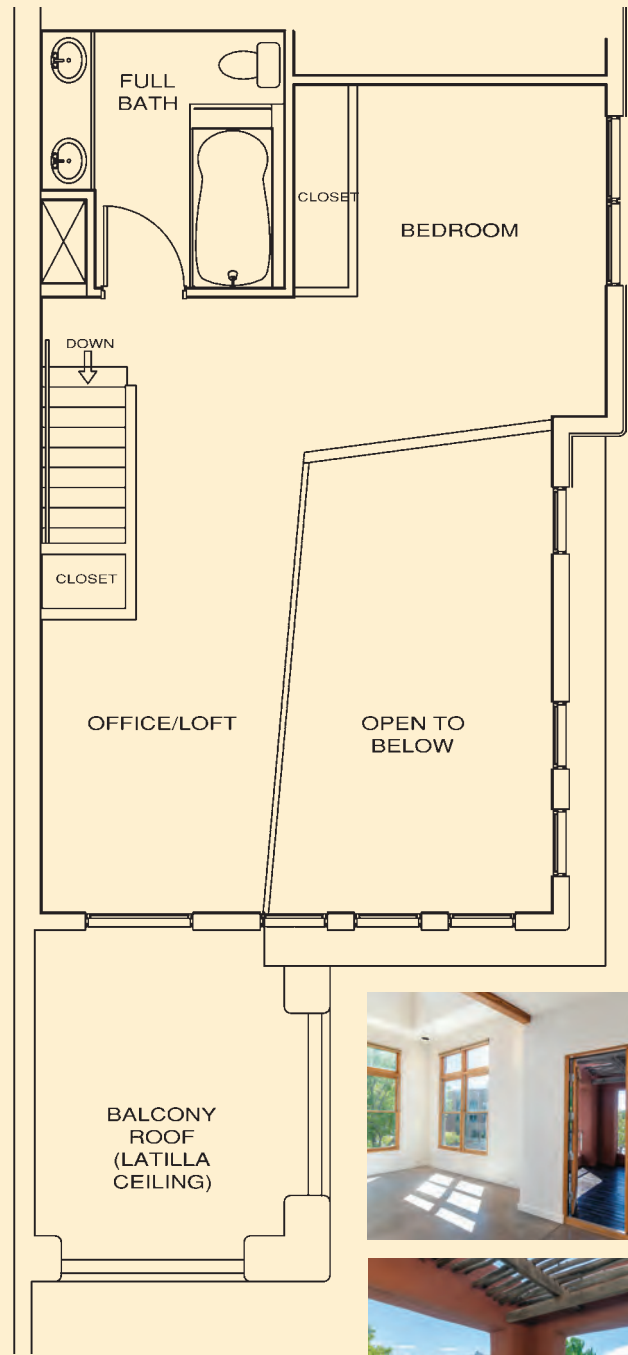
Email: claradough@gmail.com



expect more.



SECOND FLOOR



THIRD FLOOR



1012 MARQUEZ PLACE, UNIT #107B

Two Story Condo:

- 1 Bedroom, 1 Office, 1½ Bathrooms
- 2 Parking Spaces

Property Zoning: C-21

Approximate House Size: 1,340 sq. ft.

Construction: Frame, Stucco

Water/Sewer: City

Heating/Distribution:
Radiant

Cooling: Evaporative, Central

HOA/COA Fees: \$211/Monthly

Fees Cover All Exterior Maintenance

Projected Real Estate Taxes:

\$4,238.46

(Based on asking price)

The information contained herein has either been given to us by the owner of the property or obtained from sources that we deem reliable. No warranties or representations expressed or implied are made as to the accuracy of the information contained herein, and same is submitted subject to errors, omissions, change in price, and to any special conditions imposed by our principals.